

D&N

Distributable Emergency Network

What is DEN?

DEN (Distributable Emergency Network) is a fully managed software and hardware solution that helps public safety agencies improve incident response by sharing data.



- ▶ Use mission critical applications without the Internet
- ▶ Increase situational awareness
- ▶ Build a common operating picture
- ▶ No technical background required



Always Available

Web-based applications are hosted on a powerful but tiny server inside DEN. When an Internet connection is available software can be accessed anywhere in the world. When an Internet connection is not available software can be accessed anywhere within WiFi range of DEN.



Managed

DEN is managed remotely. Just like cloud-based applications there is no need for maintenance. No technical knowledge is necessary. Phone and email support are available 24/7.



Portable & Rugged

DEN is light-weight, can run on battery power for days, and is housed in a submersible, shock-resistant Pelican Storm iM2450 case. Bring it wherever it is needed, whenever it is needed.



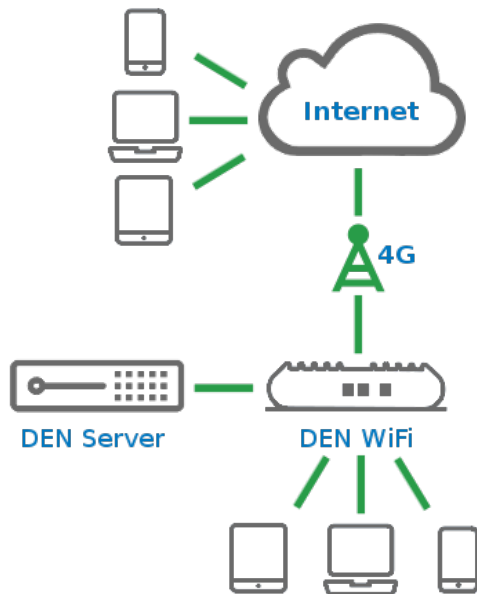
Accessible

Web-based applications are compatible with almost all devices, no installation necessary. Single-sign-on gives users access to all applications. Magic links and QR code access gives users the ability to login without the need for passwords.

How does DEN work without an Internet connection?

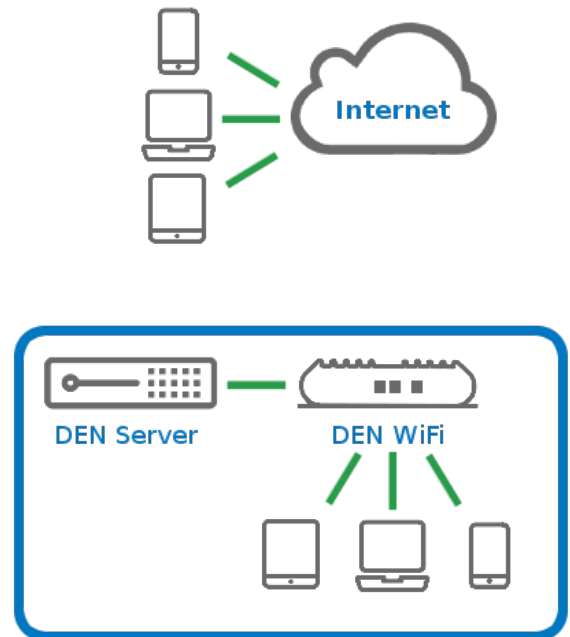
DEN creates its own local WiFi network that enables all connected devices to communicate with each other and with DEN's built-in server. This means that any device connected to the DEN WiFi network will have access to all applications, services, and data hosted on the DEN server with or without an Internet connection.

Active Internet Connection



Devices can access DEN through WiFi or the Internet

No Internet Connection



Devices can connect to DEN through WiFi

When an Internet connection is available, users can access DEN applications just as if they were connected locally.

DEN vs DEN XL

DEN comes in 2 different models - Standard and XL. Both models run the same software. The difference is the number of users and devices supported by each model. DEN supports up to 128 devices and DEN XL supports up to 250 devices. In addition, DEN XL supports load balancing between multiple carriers.



DEN



DEN XL

Raptor User Management

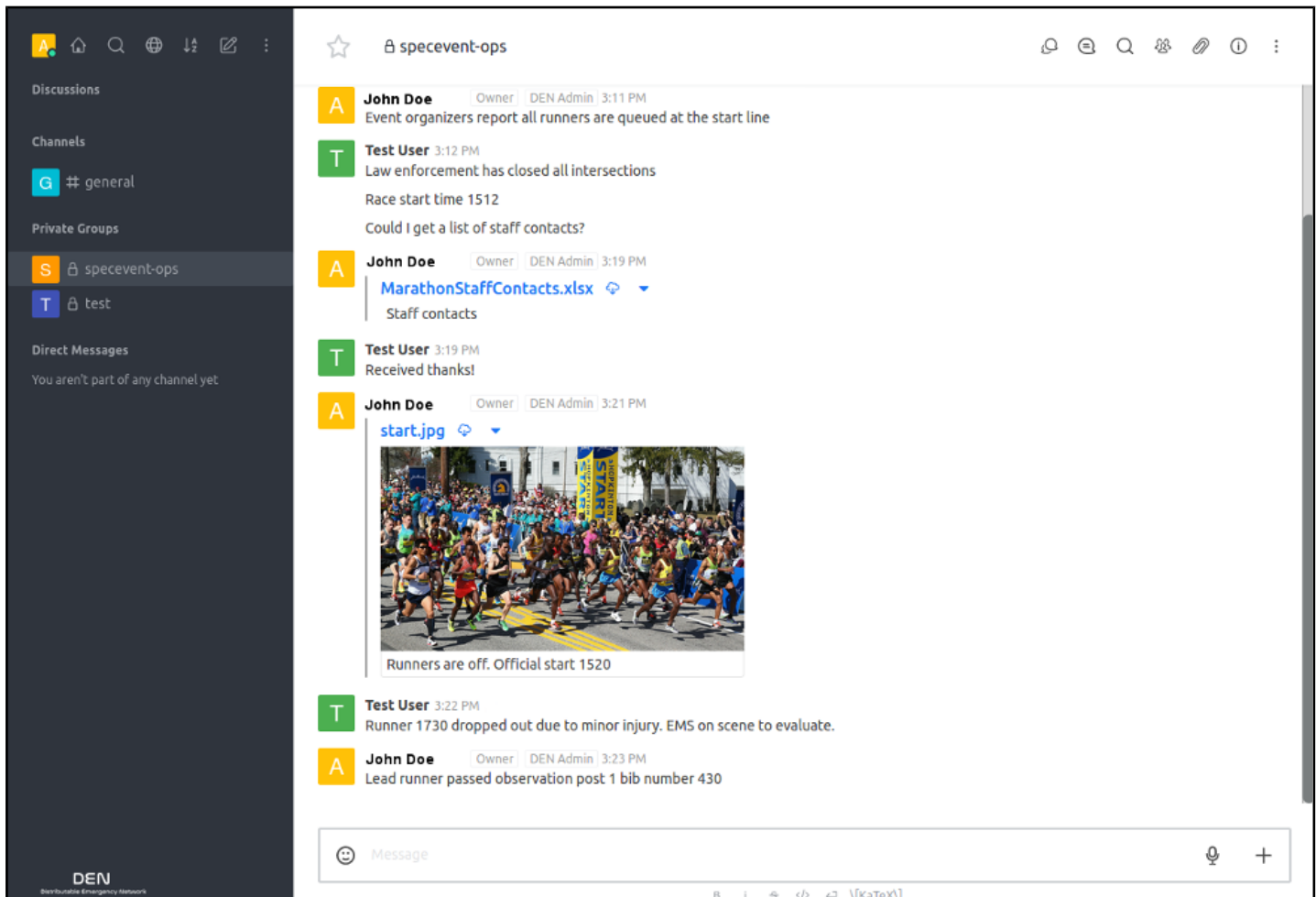
Manages all users across DEN services. When administrators add a user to Raptor an account is automatically attached to all applications. Each user has one account and one login but has access to all DEN applications and services. Access inside each application can be controlled at the user or group level.

The screenshot displays the DEN (Distributable Emergency Network) user management interface. At the top, the 'DEN' logo is prominent, followed by the subtitle 'Distributable Emergency Network'. Below this, three navigation buttons are visible: 'DEN Admin', 'Temporary Users', and 'CtKSLywE0y'. The main form area contains several input fields for user details: 'Contact name' (Demo User), 'Contact position' (Demo), 'Contact organization' (Politac LLC), 'Contact email' (sales-91235789@politac.com), and 'Contact phone' (910-777-5256). An 'Access expires' field is set to 01/01/2023 with a time of 00:00. The user's status is shown as 'ACTIVE'. A 'Notes' section contains the text 'Demo user.'. At the bottom of the form, four action buttons are provided: 'Save Changes', 'Access Card', 'Suspend Access', and 'Delete User'.

- Unified user management
- Single-sign-on
- Temporary user accounts
- Detailed logging capabilities
- QR code access

DEN Chat

Chat with any DEN user in a secure and private setting. DEN Chat enables users to chat, share files, and much more. Public and private channels can be created for different emergency functions, incidents, and events. Full access control ensures users can only view the channels they have been invited to. Supports text, video, and audio messaging.

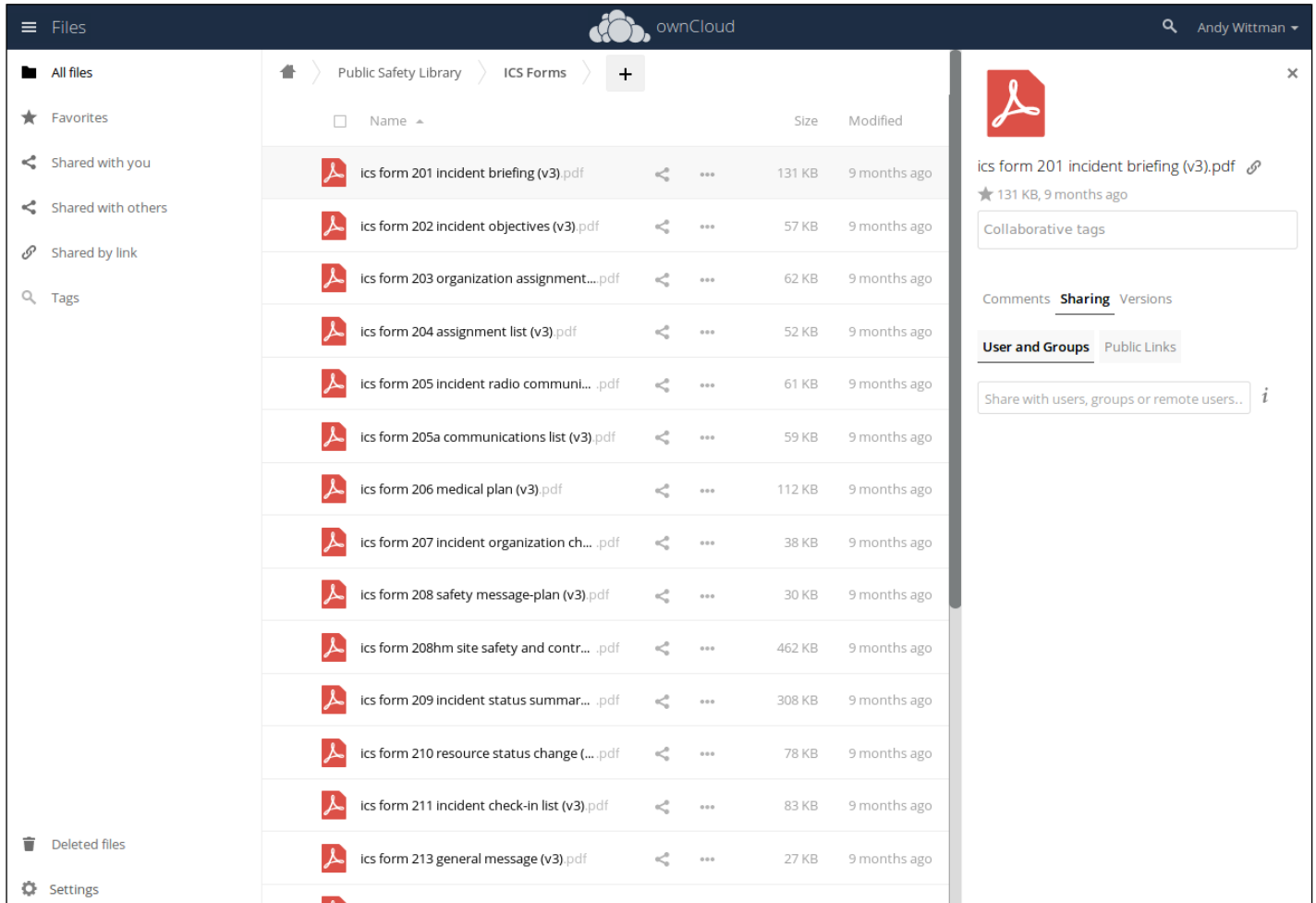


Great for:

- Improving situational awareness
- Building a common operating picture
- Tracking and logging events

ownCloud File Server

Securely share files with other DEN users or via a private link. Great for storing agency emergency plans, standard operating procedures, standard operating guides, incident action plans, images, videos, and any other documents that need to be accessible without an Internet connection.



The screenshot displays the ownCloud File Server interface. The left sidebar shows navigation options like 'All files', 'Favorites', 'Shared with you', etc. The main area shows a list of files in the 'Public Safety Library > ICS Forms' folder. The right sidebar shows the details for the selected file 'ics form 201 incident briefing (v3).pdf', including its size (131 KB) and modification date (9 months ago). Below the file details, there are sections for 'Collaborative tags', 'Comments', 'Sharing', and 'Versions'.

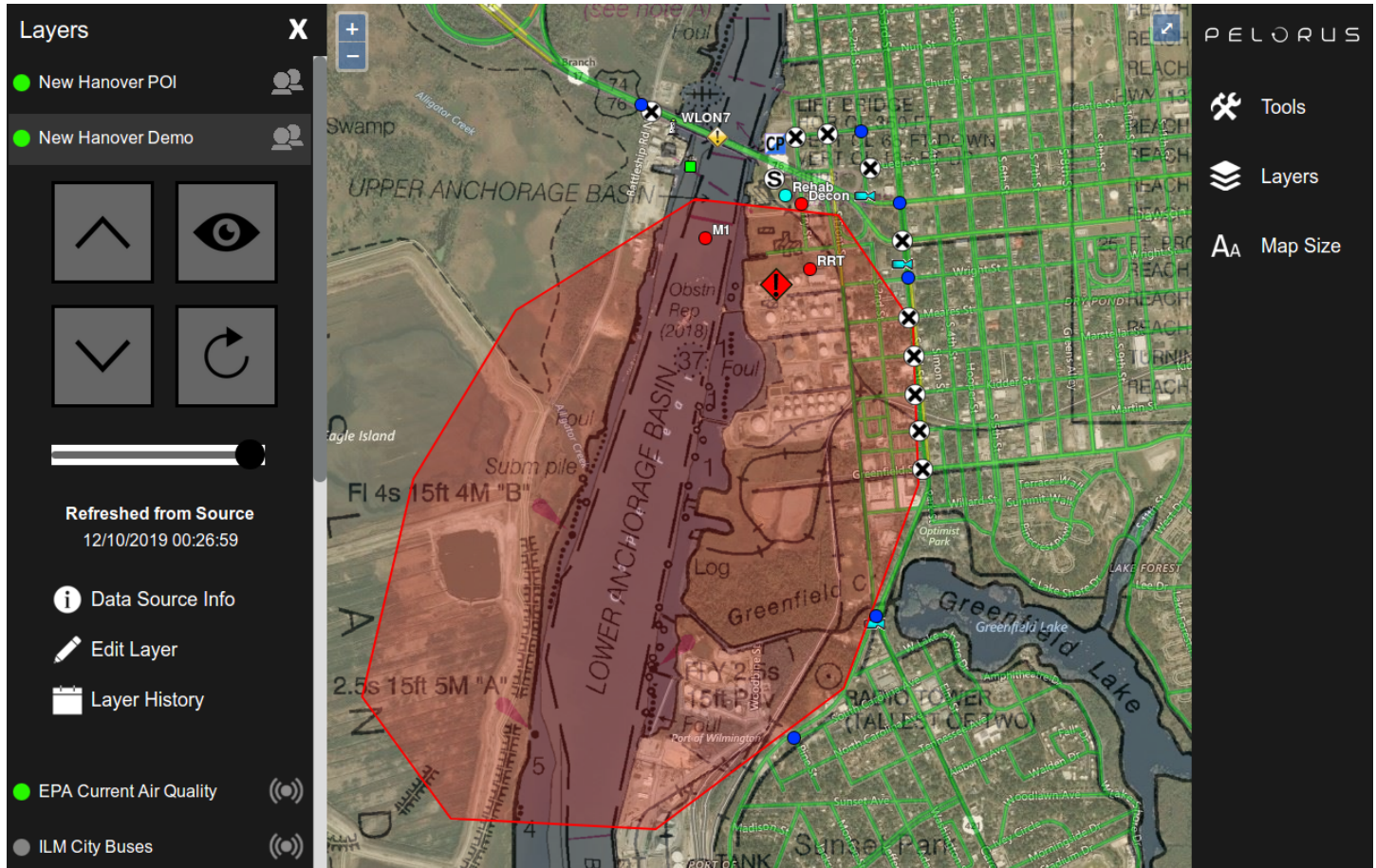
Name	Size	Modified
ics form 201 incident briefing (v3).pdf	131 KB	9 months ago
ics form 202 incident objectives (v3).pdf	57 KB	9 months ago
ics form 203 organization assignment...pdf	62 KB	9 months ago
ics form 204 assignment list (v3).pdf	52 KB	9 months ago
ics form 205 incident radio communi... .pdf	61 KB	9 months ago
ics form 205a communications list (v3).pdf	59 KB	9 months ago
ics form 206 medical plan (v3).pdf	112 KB	9 months ago
ics form 207 incident organization ch... .pdf	38 KB	9 months ago
ics form 208 safety message-plan (v3).pdf	30 KB	9 months ago
ics form 208hm site safety and contr... .pdf	462 KB	9 months ago
ics form 209 incident status summar... .pdf	308 KB	9 months ago
ics form 210 resource status change (... .pdf	78 KB	9 months ago
ics form 211 incident check-in list (v3).pdf	83 KB	9 months ago
ics form 213 general message (v3).pdf	27 KB	9 months ago

Great for:

- Sharing files with multiple users without an Internet connection
- Preservation of critical files and libraries during disasters
- Continuity of operations (COOP)

Pelorus Collaborative Mapping

Pelorus is a collaborative mapping software built into DEN that can be used to improve situational awareness and build a common operating picture. Users can easily combine GIS data sources to build maps that show live conditions, live unit locations, and other location-based data. Dozens of locally stored map layers are available to speed up loading times, conserve cellular data usage, and provide the ability to work without an Internet connection.

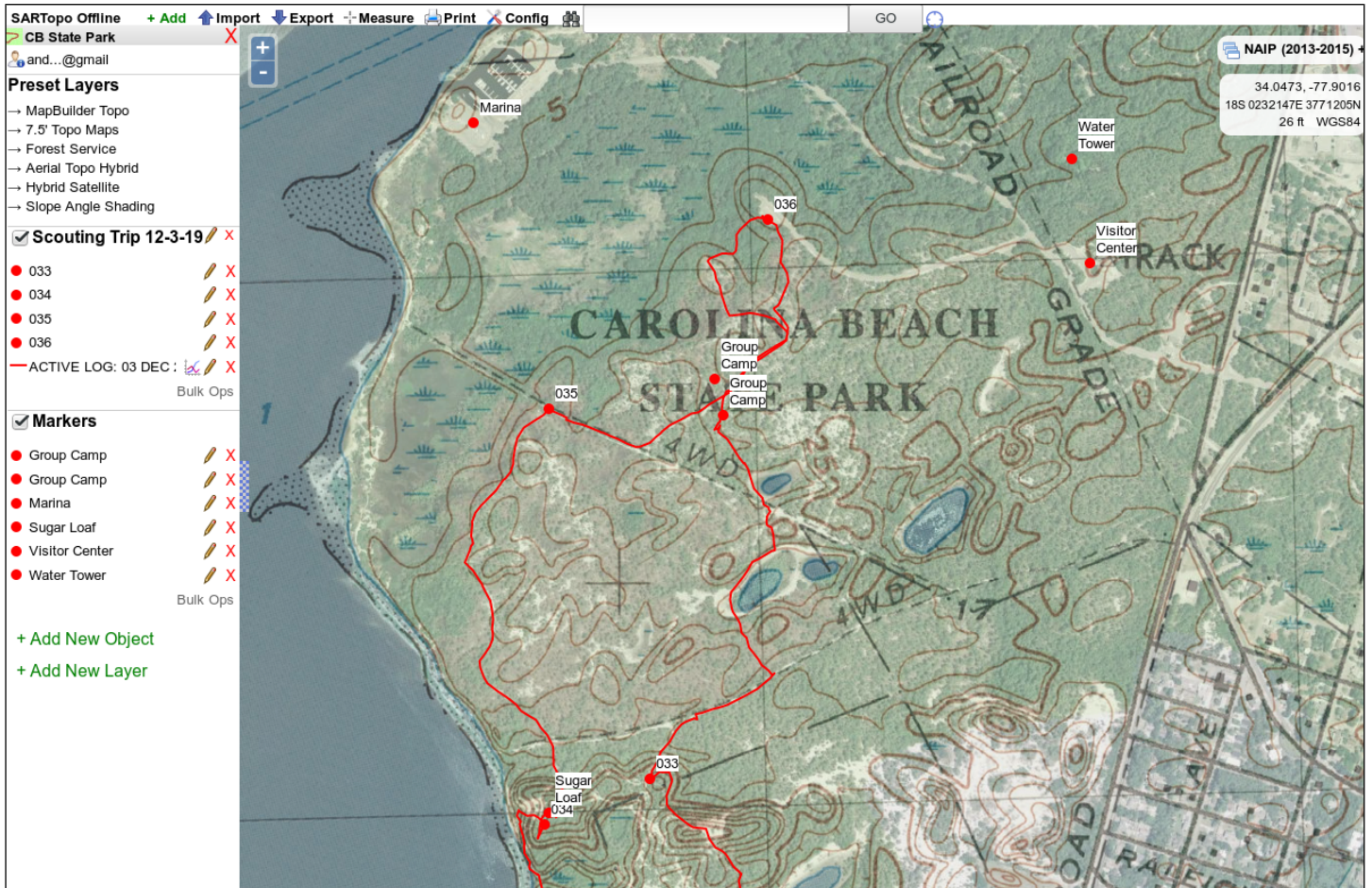


Great for:

- Unit and resource tracking
- Sharing information between agencies and departments
- Daily operations
- Special events
- Disasters
- Remote locations
- Congested urban areas

SARTopo Offline

Bring the most popular search and rescue software anywhere with DEN. Access SARTopo Offline from multiple computers through the DEN local WiFi network or through the Internet.



Great for:

- Lost person incidents
- Search and rescue teams
- Emergency management
- Law enforcement
- Remote locations

Field-based Phone System

With the field-based phone system, DEN can support up to 20 WiFi-connected phones (or 40 for DEN XL). The built-in conference line allows users to host conferences on a local and secure platform. Each phone has a 12+ hour battery life and comes with it's own charger, extension, local phone number and is capable of internal and external calls.

Great for:

- Assigning a phone to a position
- Limiting distribution of cell numbers
- Conference calls
- Situation reports
- Back-up communications



DEN Specification Sheet

Hardware

- Integrated IBR-900 1200M Cradlepoint router/modem combination
 - Carrier selection from touchscreen
- Built-in Udo0 X86 II Ultra
 - CPU: Intel Pentium N3710 2.56 GHZ
 - RAM: 8 GB DDR3L Dual Channel RAM
 - Gigabit Ethernet
- 4TB Lacie Rugged Hard Drive
- 30Ah Lithium Iron Phosphate Battery
 - Up to 30 hours battery life
 - Service life of 2000+ charge cycles at 5-10+ years
- HDMI Touchscreen control panel
 - Monitor power usage and bandwidth
 - Set WiFi password and SSID
 - Kick users
 - Run backups
- Optional external detachable antennas or high gain antenna array mounted behind lid panel
- 3' charging cable
- Pelican Storm iM2600 carry case



Software

- Raptor SSO (single-sign-on) user management system
- DEN Chat
- ownCloud File Server
- Pelorus Collaborative Mapping Software
- SARTopo Offline
- Offline high-definition orthoimagery and street maps

Service & Support

- 24/7 service and support
- Automatic software and firmware updates
- Instruction manual

DEN XL Specification Sheet

Hardware

- Integrated IBR-1700 and MC400 Cradlepoint router/modem combination
 - Carrier load balancing and automatic failover
 - WiFi for up to 250 devices
- Built-in Udo Bolt V8
 - CPU: AMD Ryzen™ Embedded V1605B Quad Core/Eight Thread @ 2.0ghz (3.6ghz Boost)
 - RAM: 16 GB DDR4 2400 Mt/s
 - Gigabit Ethernet
- 5TB Lacie Rugged Hard Drive
- 40Ah Lithium Iron Phosphate Battery
 - Up to 30 hours battery life
 - Service life of 2000+ charge cycles at 5-10+ years
- HDMI Touchscreen control panel
 - Monitor power usage and bandwidth
 - Set WiFi password and SSID
 - Kick users
 - Run backups
- Dual interference reducing antenna arrays behind lid panel (8 cellular MIMO, 2 GNSS, 6 WiFi MIMO)
- 3' charging cable
- Pelican Storm iM2950 rolling case



Software

- Raptor SSO (single-sign-on) user management system
- DEN Chat
- ownCloud File Server
- Pelorus Collaborative Mapping Software
- SARTopo Offline
- Offline high-definition orthoimagery and street maps

Service & Support

- 24/7 Service and Support
- Automatic software and firmware updates
- Instruction manual

DEN Backup Kit Specification Sheet

The DEN Backup Kit contains a full physical backup of a DEN case. If a drive or SSD card fails, it can be replaced with the parts in the kit.

DEN Backup Kit

- Full physical backup of DEN case
- Contains operating system, DEN software, and base user data

Hardware Included

- LaCie Rugged Hard Drive
 - 4TB for DEN
 - 5TB for DEN XL
- Operating system backup
 - SD card for DEN
 - NVME card for DEN XL
- USB transfer cable
- Waterproof, shockproof case

Service & Support

- 24/7 service and support
- Automatic software and firmware updates
- Instruction manual



DEN Phone Kit Specification Sheet

The DEN Phone Kit connects to a DEN case to provide 2 dedicated phone lines with their own local phone numbers and internal extensions. Multiple kits can be connected to a single DEN case.

DEN VOIP

- Dedicated local number for each phone
- Secure conference line
- Paging and intercom

Phone Features (Grandstream WP820)

- Pre-configured for DEN Case
- Dual-band WiFi
- Built-in Bluetooth for headsets
- Rechargeable 1500mAh battery
 - 7.5 hour talk time
 - 150 hour standby time

Hardware Included

- 2 WiFi VOIP phones
- 2 Charging cradles
- Waterproof, shockproof case

Service & Support

- 24/7 service and support
- Automatic software and firmware updates
- Instruction manual



DEN SPOT Tracker Kit Specification Sheet

The DEN SPOT Tracker Kit connects to a DEN case to provide location services through SPOT Trackers connected to the Globalstar Satellite Network. Kits can be purchased containing anywhere between 1-12 trackers per case.

DEN SPOT Kit

- Prepaid SPOT plan (1-5 years)
- Integration with DEN Software including Pelorus Mapping
- Great for unit and vehicle tracking in areas without cell service

SPOT Features (SPOTX)

- 2.5 minute position updates
- Satellite-based text messaging
 - Send messages between SPOT devices
 - Send emails and texts
- Bluetooth connection for pairing with mobile devices

Hardware Included

- SPOTX Satellite Messenger and Tracker
- Charging Cable
- Gear attachment strap with clip
- Plastic stand
- Waterproof, shockproof case

Service & Support

- 24/7 service and support
- Automatic software and firmware updates
- Instruction manual

